

The TPG Product Catalog 2010

World-Leading Products for Microsoft Project Simplify Your Daily Work

TPG The Project Group, based in Munich, Germany, is an international full service provider for enterprise-wide project management. The company is a Microsoft Gold Certified Partner whose services include consulting, product, solutions, hosting, and training on project management and Microsoft Project. TPG increases the maturity level of its customers' project management, making a significant contribution to their business success.

TPG's comprehensive and leading product portfolio is built on the significant implementation experience the company has acquired since it was founded in 1998. It sells its products and services via its offices in Germany, Austria, USA and UK, as well as through an international network of authorized partners. This makes the TPG products available on all continents which is especially interesting for customers with an international focus.

Work Easier and More Efficient in Company-Wide Multi-Project Management

TPG products extend the possibilities of Microsoft Project and Project Server for many recurring use cases in enterprise wide project management. Processes are much better supported and you will find yourself working easier and more efficient.

Product Highlights for Users of Microsoft Project and Project Server

- TPG PSLink®, the world's leading and SAP-certified product for the integration with SAP
- TPG ProjectLink for easily connecting tasks and information in multi-project management
- TPG MTA, the milestone trend analysis for clear milestone reports
- TPG PortfolioPlanner for portfolio planning with optimized resources
- TPG TeamLink supports project and line managers with their resource planning activities
- TPG ProjectDetails for detailed information on each project task from external sources
- TPG ProjectProperties allows an easy way to manage key project master data
- TPG ProjectDeputy for easily assigning write permissions to deputies

Products for Administrators

- TPG ResourceLink allows flexible Updates to the Project Enterprise Resource Pool
- TPG OLAP SecurityManager for an fast Setup of Access Permissions to OLAP Data
- TPG MailNotifier keeps you automatically informed of important project conditions
- TPG ToolbarCustomizer for slimmed-down menus in Microsoft Project
- TPG VersionChecker prevents crashes of Microsoft Project and assures user acceptance

For more products please visit our website www.theprojectgroup.com



Microsoft Enterprise Project Management

Microsoft EPM is an enterprise wide solution for project management. As a platform for planning, information, and communication that spans multiple projects and departments, it enables you to better plan and supervise projects; centralize the management of resources; and perform sophisticated reporting.

The platform is based on Microsoft Project Professional, Microsoft Project Server, and Project Web Access / Web App in the versions 2003 and 2007.

The new version 2010 now also provides an integrated system for demand and portfolio management.

TPG PSLink® 2010

The World's Leading Product for Integrating Microsoft Project with SAP

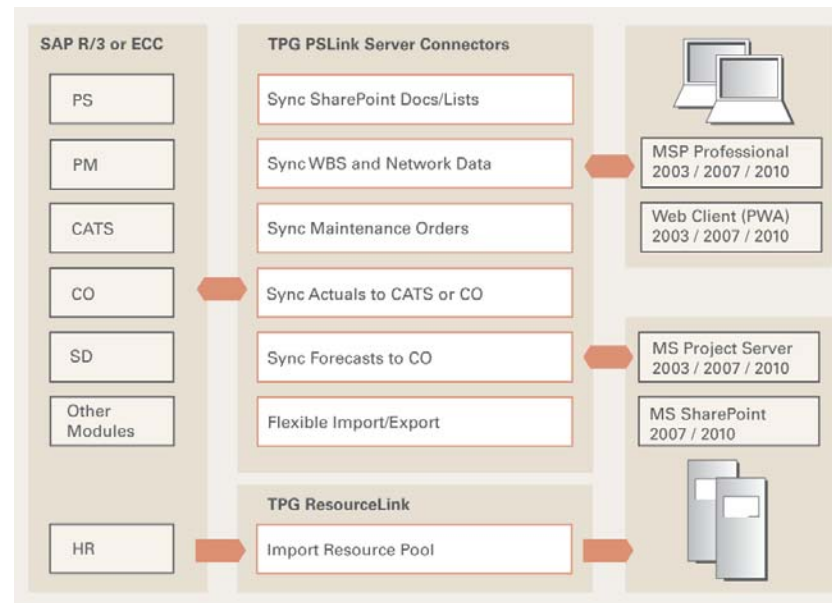
Compatibility:

Microsoft Project Server 2003
Microsoft Project Server 2007
Microsoft Project Server 2010
Microsoft SharePoint 2007
Microsoft SharePoint 2010
SAP/R3 4.6c und höher, ECC 6.0

Some TPG PSLink References

AOL, USA
Atlas Elektronik, GER
BAE British Aerospace, GB
Bentley Systems, USA
City of Braunschweig, GER
Cologne Public Transport, GER
Corus, GB
DESY, GER
Dimension Data, ZA
EADS, GER
Felsomat, GER
Frequentis, AUT
GoodYear, USA
Harman International, USA
Irish Rail, IRL
Israel Aircraft Industries, IL
Kayser-Threde, GER
Keiper Recaro, GER
MAN Diesel SE, GER
Miele Household Appl., GER
Ministry of Finance, TH
MT Aerospace, GER
Nordex Wind Turbines, GER
Rentschler, GER
SGL Carbon, GER
Siemens Building Technol., GER
Siemens Energy, GER
Siemens Mobility, USA
TDW, GER
Tyco Electronics, USA
Varian Medical Systems, USA
etc.

TPG PSLink is the world's leading and only SAP-certified product for a bidirectional data exchange between Microsoft Project, SharePoint and SAP. Its extensive checking mechanisms ensure the complete consistency of all data shared between the systems at all times. The product is very flexible for use in a range of different scenarios – even if the SAP PS module has not been implemented. Extensive configuration options offer you an unrivaled rapid implementation time of just a few days!



The Benefits:

- Simplifies multiple tasks with streamlined, end-to-end project management processes
- Integrated project planning, cost accounting, collaboration and document management
- Eliminates need to manage data in 2 different systems
- Improved data quality for project leaders, accounting staff and management
- Multitenancy-enabled
- Mobile use of SAP data

Features At-a-Glance:

- Very rapid implementation due to extensive configuration options
- Middleware with Web client and Microsoft Project add-in
- Comprehensive verification mechanisms for maximum reliability
- Full integration with the Microsoft Project Server security system
- Synchronization can be manual or automated with its own job queue administration
- Supports as many SAP systems, SAP clients and Project Server sites as required
- Multi-lingual interface
- Proven solution over many years with multiple customer references

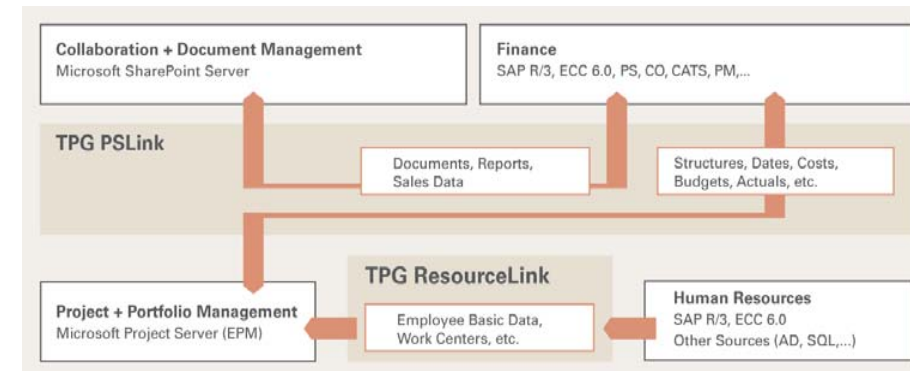
www.theprojectgroup.com/pslink

Business Scenarios

TPG PSLink and TPG ResourceLink are connectivity products that are essential for designing and implementing company-wide project and portfolio management based on Microsoft Project, SharePoint and SAP. They combine portfolios, projects, finance and human resources in a well-integrated solution that increases your project management efficiency.

Important Integration Use Cases

- Resource master data, such as personnel numbers or cost centers, are an important basis for all other use cases. TPG ResourceLink ensures that the resource pool is always synchronized with SAP.



- Structures can be partly or fully synchronized with SAP in both directions. Structures can be filtered using any criteria, such as the relationship with Microsoft Project tasks or outline code field definitions.
- PSLink covers a wide range of SAP network-based use cases. For example, Microsoft Project tasks can be mapped with SAP network activities, either directly or using configurable consolidation logic. The synchronization can also include the other SAP network objects, such as activity elements, material components and milestones.
- Sharing data with PM orders works in a similar way, enabling the integration of projects for machine maintenance, production stoppage and plant inspection. Staff can perform scheduling and resource planning and monitor the project's progress – all within Microsoft Project.
- A key feature in TPG PSLink is the exchange of internal and external costs with any SAP cost objects. Planned values for work and primary costs can be aggregated to any cost accounting parameters, such as WBS elements, internal order, cost center, and cost and activity type. With this SAP-compliant aggregation, the values can be transferred into SAP activity input and primary cost planning, always in relation to the relevant period of the fiscal year. This is the ideal way to keep SAP and Microsoft Project cost plans synchronized and avoid unnecessary details in SAP.
- Along with forecasts, TPG PSLink can transfer posted time from Microsoft Project to SAP CATS or to CO activity allocation documents. It can also import in the other direction – from SAP into Microsoft Project.
- TPG PSLink also supports the exchange of SAP and Microsoft SharePoint lists and documents.
- TPG PSLink provides the flexibility to transfer any data to or from any SAP module by configuring update direction, conditions, mappings and filter criteria.

"We chose TPG for the excellent quality of their PSLink product, but also due to PSLink's very good cost-benefit ratio."

Bill Courcha, BAE British Aerospace

"The TPG solution currently automates some of our manual tasks. TPG ProjectLink aggregates all our detailed Microsoft Project plans into one overall project plan. TPG PSLink then transfers its structure and deadlines to SAP. The cost and work planning data from the detailed plans are directly integrated with SAP via TPG PSLink. This combination of products has made everything easier for us."

Rainer Schwarz, EADS Def. Electron.

"TPG PSLink clearly convinced us with its many references and the cost-performance ratio. Furthermore it is especially important to us that project managers and controllers work with a user-friendly tool that is optimized for their daily work."

Jörg Unger, City of Braunschweig

"TPG PSLink provides an accurate and efficient method of aligning Microsoft Project to the Primary SAP system in Corus' Maintenance Planning. The product also is a suitable solution to effectively manage the high volume of data for a number of international Corus Sites throughout the UK and the Netherlands."

Damon Owen, Project Manager, Corus

"We're also impressed with the TPG product performance – we schedule nightly synchronizations between Microsoft Project and SAP, but most jobs complete in less than 30 minutes even if we need to run them during the day."

Kevin Hiebert, AOL

TPG ProjectLink 2010

Easily Connecting Tasks and Information in Multi-Project Management

Efficient collaboration across projects is a key success factor in multi-project management. To achieve this, you need to be able to transparently share information about schedules, work and costs between projects. TPG ProjectLink provides this crucial transparency – even between different companies.

Project managers use TPG ProjectLink to link external tasks to their own planning. They can mirror the bar charts in their own schedule, enabling them to see at a glance which external tasks have changed and how. They can also easily view other details about every linked task, which is important for multi-project overviews. In addition, project status information can be displayed in traffic light form to the steering committee, giving its members important pointers about the state of the project. They can also easily view details of costs, work, etc.



The Benefits:

- Transparency of links between tasks across projects
- At-a-glance, multi-project overviews of the project portfolio's current status
- Simple creation of project links between different companies
- Clear, graphical comparison of a project manager's own tasks with external tasks
- Time savings due to information about changes in relevant external projects
- Better performance with easy links to external projects without having to open each project

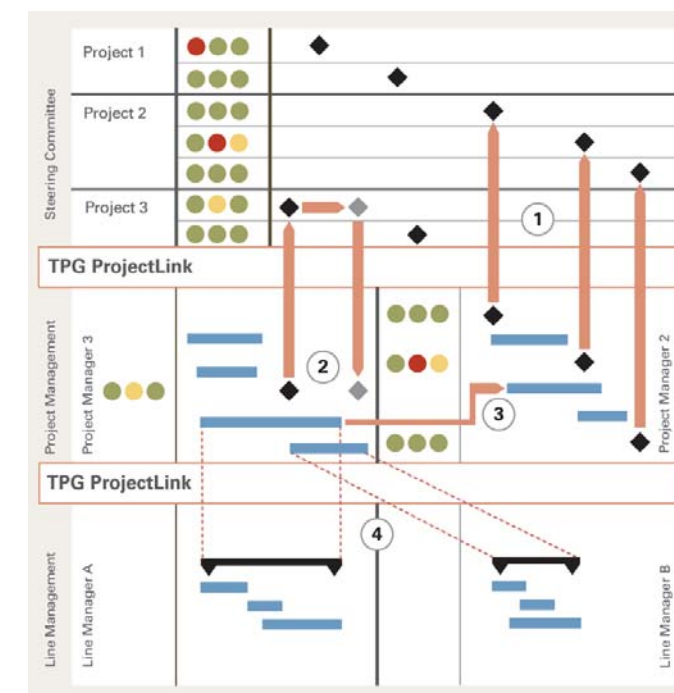
Features At-a-Glance:

- Choice of data sources including Microsoft Project Server sites, Windows SharePoint Services (WSS) lists and SQL databases
- Configurable field mapping to suit a wide range of use cases
- Easy set-up of links between tasks with the innovative Task Picker (access rights are managed by the Microsoft Project Server permissions system)
- Mirroring of external tasks into the project manager's own project

www.theprojectgroup.com/projectlink

Key Use Cases for Project Linking Using TPG ProjectLink

1. Multi-project overviews with status display: You can select and combine relevant milestones from individual projects into a multi-project overview – useful for the steering committee. Alongside the time-related information, you can add information about the status of a particular project (e.g. with traffic light display). A function for automatically linking back to the source allows you to add the steering committee's input to the individual projects.
2. Program management: You can easily mirror requirements for milestones and tasks from the main projects in the Microsoft Project plans of sub-projects.
3. Connections with individual projects: As a project manager, you can use the innovative TPG Task Picker to select – in accordance with your permissions – which tasks from other projects you want to display in your own schedule. You also have a choice of types of connections. In addition, you can decide whether to allow your schedule to be changed externally or to only view the data. These links can also be set up between projects involving different companies.



4. Coordination in matrix organizations between project and line staff: As a project manager, you can use Microsoft Project to prepare the time-related requirements you need from line managers. They then carry out their detailed planning in Microsoft Project. The summary task made up of the line managers' responses is displayed in your Gantt chart. This enables you to coordinate with the line manager in case any discrepancies arise. Alongside time-related information, other field content such as work, costs, notes etc. can be transferred in both directions.
5. Ad-hoc queries on the task level: As a project manager you can run any queries you choose, e.g. display all tasks from all your projects within a specific time frame.

"The TPG solution currently automates some of our manual tasks. TPG ProjectLink aggregates all our detailed Microsoft Project plans into one overall project plan. TPG PSLink then transfers its structure and deadlines to SAP. The cost and work planning data from the detailed plans are directly integrated with SAP via TPG PSLink. This combination of products has made everything easier for us."
Rainer Schwarz, EADS Def. Electron.

Compatibility:

Microsoft Project Server 2003
Microsoft Project Server 2007
Microsoft Project Server 2010



TPG ProjectLink won one of the second places out of around 1,600 applicants for the innovation award of the German initiative for medium-sized businesses. The innovation content and usefulness of this product convinced the jury.

TPG MTA Client 2010

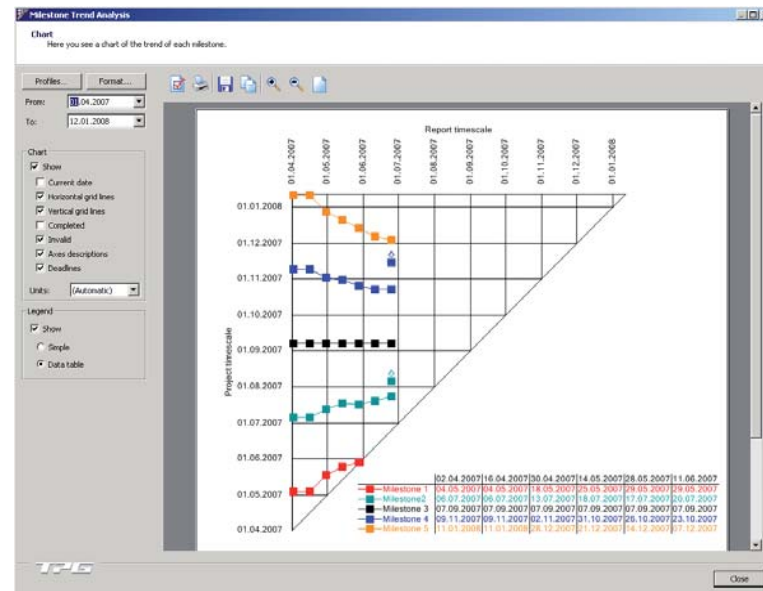
Fully-Integrated Milestone Trend Analysis for Microsoft Project

Compatibility:

Microsoft Project Client 2000
Microsoft Project Client 2002
Microsoft Project Client 2003
Microsoft Project Client 2007
Microsoft Project Client 2010

Milestone Trend Analysis (MTA) is an easy-to-read combination of the history and prognosis of selected project milestones. It gives users a graphical overview of time-related deviations arising during a project and ensures reliable planning by regularly updating the actual situation in relation to the milestone deadline.

TPG MTA Client is installed on the project manager's PC and is seamlessly integrated into Microsoft Project. The clear advantage of MTA Client, compared to other products of this type, is that the MTA data are stored directly in the Microsoft Project file for the project. No further files are necessary. As a result, you may send the data to other users of TPG MTA Client and they can access them immediately.



The Benefits:

- Graphical support for reporting with a clear overview of how projects are evolving over time
- Timely detection of deadline bottlenecks
- Project participants have a better awareness of milestones and their deadlines, increasing planning reliability

Features At-a-Glance:

- Seamless integration into Microsoft Project
- Data are stored within the project file with no need for a separate file
- Configurable graphic output is easy to print out
- Can be used with projects on the Project Server and mpp files
- Configurable profiles for views with specific milestones
- Works with multiple projects and can import MTA data from TPG MTA Server

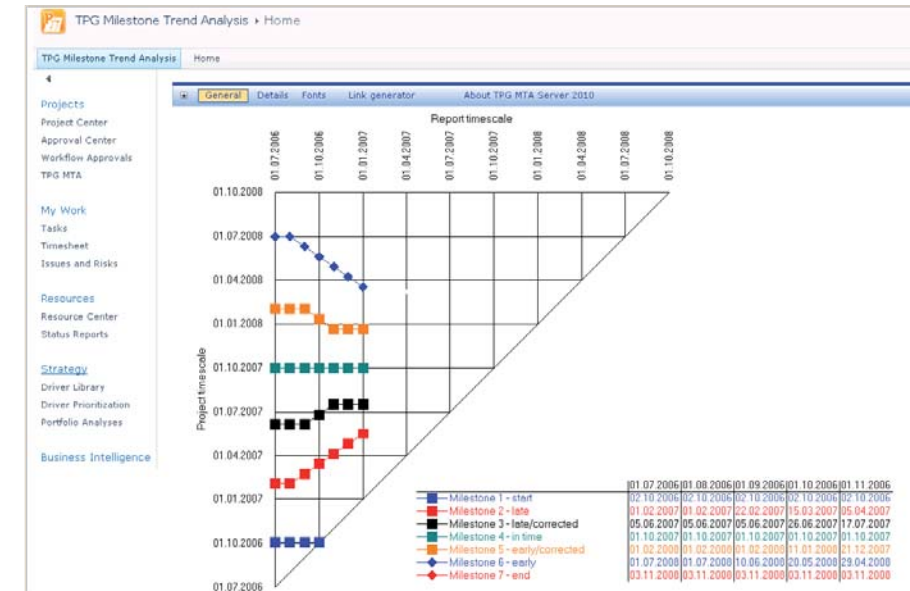
www.theprojectgroup.com/mtaclient

TPG MTA Server 2010

The First Milestone Trend Analysis for Microsoft Project Server

Milestone Trend Analysis (MTA) is an easy-to-read combination of the history and prognosis of selected project milestones. It gives users a graphical overview of time-related deviations arising during a project and ensures reliable planning by regularly updating the actual situation in relation to the milestone deadline.

TPG MTA Server is integrated as a web part into Microsoft Project Web Access, where it can form part of a management dashboard. Managers can select any project in the portfolio in accordance with their access permissions. In combination with the TPG MTA Client, the data are also available offline.



The Benefits:

- Graphical support for reporting with a clear overview of how projects are evolving over time
- Timely detection of deadline bottlenecks
- Project participants have a better awareness of milestones and their deadlines, increasing planning reliability

Features At-a-Glance:

- Seamless integration into Microsoft Project Web Access / Web App
- Freely configurable settings for periodic saving of the data pool
- Filter capability across milestones
- Deadlines can be displayed for every milestone
- Graphic can be formatted and copied into Microsoft Office documents
- Configurable permissions system based on the Microsoft Project Server

www.theprojectgroup.com/mtaserver

Compatibility:

Microsoft Project Server 2003
Microsoft Project Server 2007
Microsoft Project Server 2010



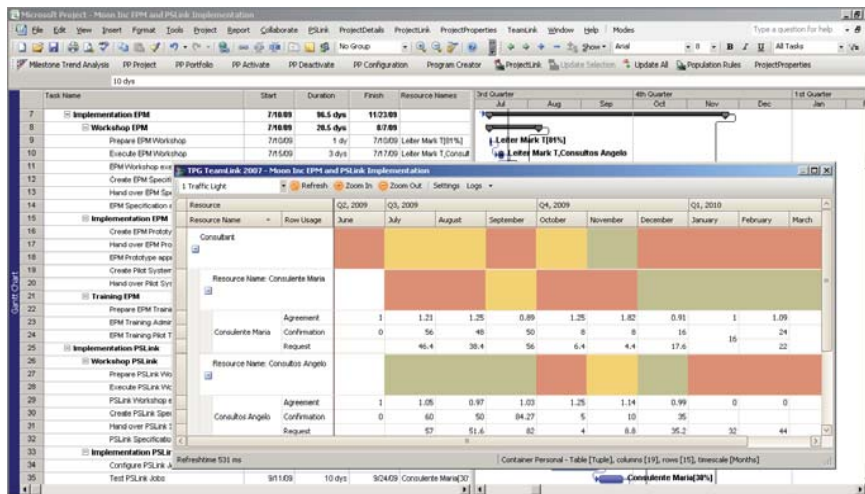
TPG ProjectLink won one of the third places out of around 1,600 applicants for the innovation award of the German initiative for medium-sized businesses. The innovation content and usefulness of this product convinced the jury.

TPG TeamLink 2010

Graphical Resource Optimization between Project and Line Managers

Coordinating the use of resources between the project manager and various line managers is a key part of enterprise-wide project management. Right from the outset, the project manager must bring the project to completion using the resources committed by the line managers. Depending on how the project progresses, this can sometimes be challenging and time-consuming. This is where TPG TeamLink can help.

TPG TeamLink brings together – as a graphic to facilitate comparison – the resources that have been requested with those committed. When the project manager makes changes in the project's Gantt chart, they are immediately reflected in the TPG TeamLink graphic. If there are schedule changes in the project, the project manager can easily and flexibly identify the best way to adapt it to the new circumstances.



All he or she needs to do is move the Gantt chart to bring the TPG TeamLink graphic into the green area. This signifies that the modified planning is still possible with the resources that were committed previously.

The Benefits:

- Project and line managers use the easy-to-read graphical display of requested and committed resources to facilitate their planning and reporting
- The project manager can work quickly to make changes while keeping within the availability of committed resources – and with little need to contact line managers

Features At-a-Glance:

- Seamlessly integrated in Microsoft Project Professional
- Graphical display of requested and committed resource availability
- Data referenced in resource commitments can come from any SQL-based source
- Write permissions in external project plans are not necessary (safeguards plan integrity)

www.theprojectgroup.com/teamlink

Compatibility:

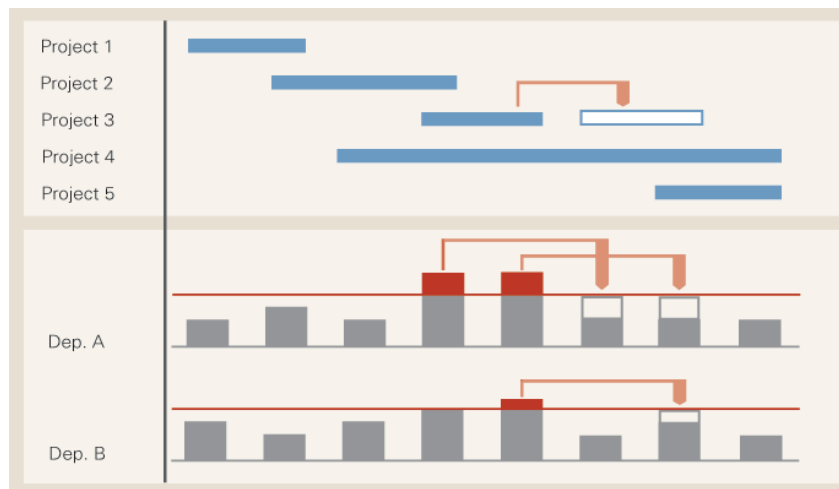
- Microsoft Project Client 2003
- Microsoft Project Client 2007
- Microsoft Project Client 2010

TPG PortfolioPlanner 2010

Optimal Resource Utilization with Mouse-based Portfolio Planning

When a great idea finally turns into a real, approved project, the first question is usually: when will the resource situation let us get started? TPG PortfolioPlanner can help. It lets you aggregate the data from new and current projects on the project level and show each one as a task in Microsoft Project. This gives you a comprehensive yet easy to read overview of all projects in a single bar chart.

Below the bar chart, a dialog box displays several resource histograms summarized by department together with a line representing maximum capacity. Current and new projects are shown in different colors. All you need to do is drag and drop the project bars in Microsoft Project until the resource peaks are below the overload level. This enables you to test simulations quickly and save the results of different variants.



The Benefits:

- Manual optimization of resource utilization by simple drag and drop
- Graphical simulation of current state of projects and immediate view of impact on the resources involved
- Summary of all project data in an easy-to-read diagram

Features At-a-Glance:

- Simultaneous display of consolidated project schedules (one bar per project) along with several consolidated histograms
- Variable portfolio resource summaries – by department, by subsidiary, etc.
- Highly configurable graphics (bars and lines)
- Data for new projects can be taken from any SQL-based source and information about current projects comes from the Project Server
- Different simulation results can be saved

www.theprojectgroup.com/portfolioplanner

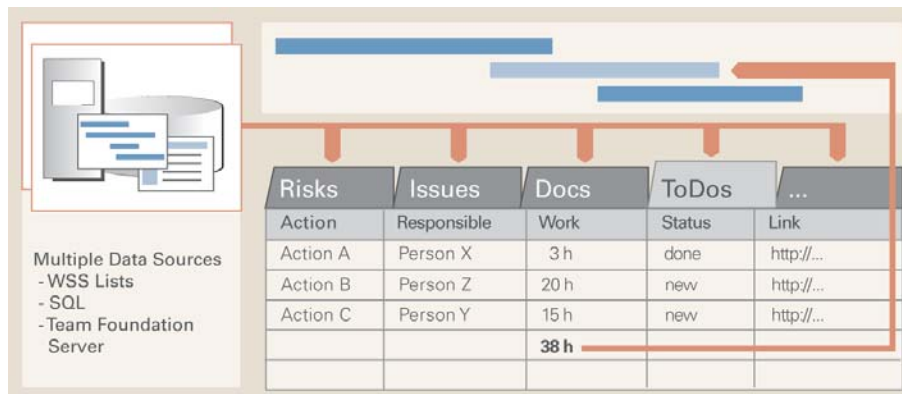
Compatibility:

Microsoft Project Server 2003
Microsoft Project Server 2007
Microsoft Project Server 2010

TPG ProjectDetails 2010

Detailed Information on Each Project Task from External Sources

Extensive task lists can make project plans unnecessarily bloated. So how can project managers keep their schedule streamlined while having all important information at their fingertips? The answer is with TPG ProjectDetails. This intelligent tool gathers information from external lists and displays it together with the corresponding project task in Microsoft Project. The external lists can contain various types of data, such as tasks, risks, problems, documents and more.



With one click, project managers can access all this information exactly where and how they need it – within the relevant task, and structured in tabs.

A good example of how TPG ProjectDetails can be used is with information about the status or progress of a project. This type of data is often shown as a percentage of completion, yet this lacks precision. A better alternative is to assign to each project task an external task list that team members can update outside of Microsoft Project, while providing the information to project managers within Microsoft Project. It shows them at a glance how many tasks in the list have been completed, giving them a much better idea of how the project task is really progressing.

The external lists can be imported from SQL databases, SharePoint, or the Team Foundation Server. Although the data are created by team members, no third parties can access the project plan itself. If required, the project manager can import the external details into the plan and work on them there.

The Benefits:

- Team members and project managers work with their own data independently of each other
- All up-to-date details are immediately available for each project task
- Schedules stay streamlined while integrating extensive external information

Features At-a-Glance:

- Displays as many lists as required in corresponding tabs within the Project Client
- Imports data into the project plan in aggregated form if required

www.theprojectgroup.com/projectdetails

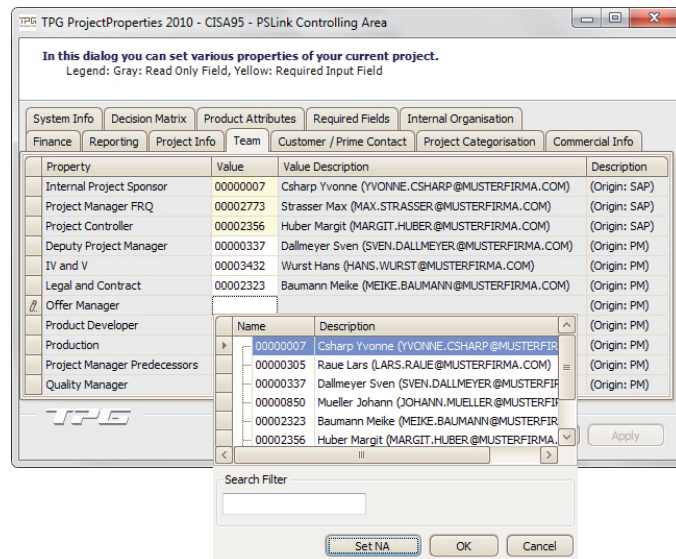
Compatibility:

Microsoft Project Client 2003
Microsoft Project Client 2007
Microsoft Project Client 2010

TPG ProjectProperties 2010

An easy way to manage key project master data

Project managers often need to work with important master data for their project. However, Microsoft Project can make this difficult as the "Project Information" dialog is only available as an alphabetical list and not very user friendly. Also, fields cannot be write-protected and users are unable to continue working on the project plan if the dialog window is still open. This is where TPG ProjectProperties can help. It includes several features that make it easier to work with key master data.



TPG ProjectProperties is a dialog window that enables users to view and work with project master data as well as the contents of the Project Summary Task. They can use the register function to organize the information layout and structure it thematically. Also, the supporting selection lists are filterable. Each field comprises a description and tips for how to fill it out based on its content type. Mandatory fields and write-protected areas are highlighted in color for more clarity. Users can open several dialogs from different projects in parallel and work on them offline as well as online.

The Benefits:

- Clear and convenient administration of project master data
- Simultaneous comparison of property dialogs for several projects

Features At-a-Glance:

- Users can work on the project plan when the Properties dialog box is open
- Filterable selection lists support quicker data entry
- Configuration can be tailored to the user's role
- Each field includes a description and tips for filling it out based on its contents
- Data can be shared between projects using export and import functions

www.theprojectgroup.com/projectproperties

Compatibility:

Microsoft Project Client 2003
Microsoft Project Client 2007
Microsoft Project Client 2010

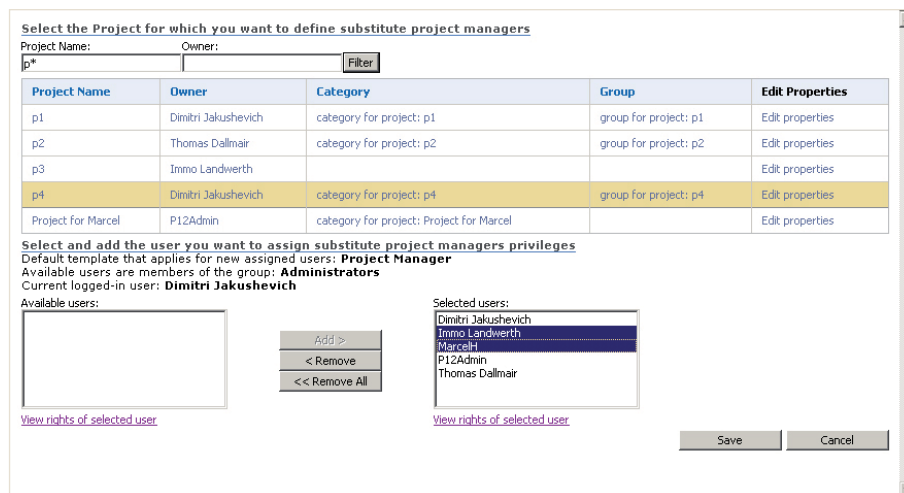
TPG ProjectDeputy 2010

Project Managers Easily Assign Write Permissions to their Deputies

In Microsoft Project Server, the standard permissions system only gives write permissions to the person who has created the project – the ‘project owner’. If he or she wants to give write access to other people working on the project, the administrator has to configure it manually. If there are a lot of projects on the Project Server, manual configuration becomes more and more confusing and time-consuming. This is where TPG ProjectDeputy can help.

Compatibility:

Microsoft Project Server 2003
Microsoft Project Server 2007
Microsoft Project Server 2010



Select the Project for which you want to define substitute project managers

Project Name: Owner:

Project Name	Owner	Category	Group	Edit Properties
p1	Dimitri Jakushevich	category for project: p1	group for project: p1	Edit properties
p2	Thomas Dallmair	category for project: p2	group for project: p2	Edit properties
p3	Immo Landwerth			Edit properties
p4	Dimitri Jakushevich	category for project: p4	group for project: p4	Edit properties
Project for Marcel	P12Admin	category for project: Project for Marcel		Edit properties

Select and add the user you want to assign substitute project managers privileges
Default template that applies for new assigned users: **Project Manager**
Available users are members of the group: **Administrators**
Current logged-in user: **Dimitri Jakushevich**

Available users:

Selected users:
Dimitri Jakushevich
Immo Landwerth
Marcel H
P12Admin
Thomas Dallmair

A growing number of companies set up centralized Project Management Offices, which need to transfer project-specific user permissions to managers for the projects that have been created centrally. Also, project managers may need to specify who is standing in for them while they are away. These examples are typical use cases for TPG ProjectDeputy, which resolves the issue quickly and lightens the administrator’s workload.

The Benefits:

- High flexibility in configuring the permissions system of projects
- Reduces the administrator’s workload
- Helps avoid errors in the permissions system
- Increases acceptance of the project management solution

Features At-a-Glance:

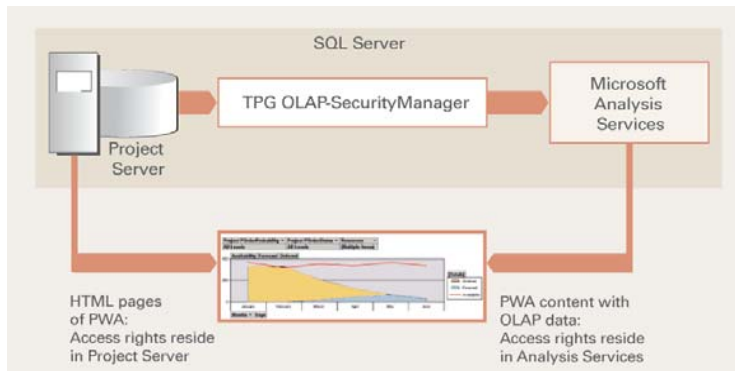
- Easy-to-use interface
- Fully integrated into Microsoft Project Web Access / Web App

www.theprojectgroup.com/projectdeputy

TPG OLAP-SecurityManager 2010

Fast Setup of Detailed Access Permissions for OLAP Data

The permissions system enabling access to Project Web Access pages resides in the Microsoft Project Server. Yet displaying content from the OLAP Cube (the Microsoft Analysis Services) in Web Access / Web App is subject to the Analysis Server's permissions system. The problem here is that project participants can access data that is not intended for them, especially if the configuration is too limited. The alternative is to grant permissions in a more granular way, but this means a lot of time-consuming configuration work for the administrator. This is where the TPG OLAP-SecurityManager can help.



TPG OLAP-SecurityManager limits access to project and resource lists within the Microsoft Analysis Server. The administrator can quickly set up these access rights to be aligned with those in the Project Server's permissions system. The advantage for project and resource managers is that they have access to all the analyses that are relevant to their work. At times they have no access at all, because the administrator completely blocks OLAP data for security reasons and because of the configuration work required to make changes. In this way, TPG OLAP-SecurityManager provides staff with improved project data analysis capabilities and contributes to their project success.

The Benefits:

- Maximum information on individual project analyses for authorized users
- No unauthorized access to OLAP content (underpins corporate security policies)
- Significant time savings for the administrator with simple and detailed permissions transfer as well as with automatic updates

Features At-a-Glance:

- Permissions can be extended outside of the Project Server with XML files
- Updates at regular intervals using Windows Scheduling Services

www.theprojectgroup.com/olap-securitymanager

Compatibility:

Microsoft Project Server 2003
Microsoft Project Server 2007
Microsoft Project Server 2010

TPG ResourceLink 2010

Flexible Updates to the Microsoft Project Enterprise Resource Pool

Importing data manually into the Microsoft Project Server from different systems can be time-consuming, so the information may not always be up to date. TPG ResourceLink enables you to not only perform the initial population of the Microsoft Project Server Enterprise Resource Pool, but also to continually update it.

You can use any data sources, including SAP, Active Directory, Dynamics and SQL Server. This makes it much easier for administrators to create, update, activate, deactivate, and delete resources in the Resource Pool.



In addition, the solution provides optimal support for project managers, because they can plan and calculate using the newest data on staff and costs.

The Benefits:

- Security and support for project managers, who can plan based on up-to-date resource information
- Administrators relieved of tedious and time-consuming data administration tasks

Features At-a-Glance:

- Creation, update, activation, deactivation and deletion of resources
- Import of many Enterprise Resource fields of Microsoft Project Server
- Comprises also resource cost rate tables, resource availability, and resource calendars.
- Preview function for import
- Synchronization using a freely defined field, e.g. personnel number
- Definition of the principal system for each resource property/field
- Detailed logging
- Scheduling of import tasks
- Administration of multiple Project Servers and sites per server
- Decentralized administration
- High performance Project Server

www.theprojectgroup.com/resourceLink

Compatibility:

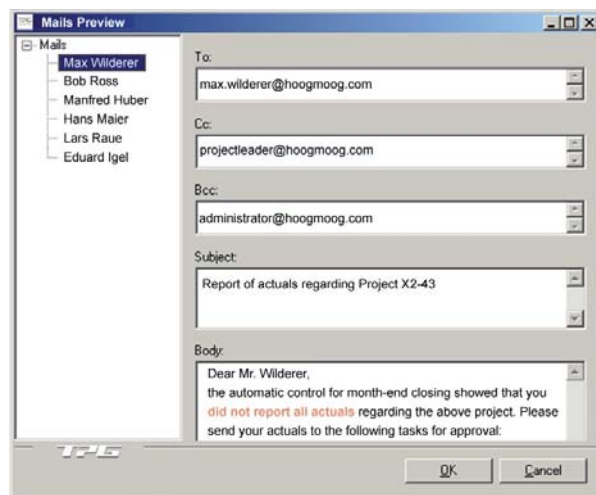
Microsoft Project Server 2003
Microsoft Project Server 2007
Microsoft Project Server 2010

TPG MailNotifier 2010

Keeps You Automatically Informed of Important Project Conditions

TPG MailNotifier supports efficient communication between project participants. Depending on project conditions on the task level, you can send freely configurable e-mails to any distribution list. These e-mail alerts facilitate several processes and you can configure several use cases, as shown in the following examples.

TPG MailNotifier detects which periodic time sheets haven't been completely filled out. It then sends out a role-specific e-mail alert to the project staff concerned. The tool can be used in other ways too as described below.



TPG MailNotifier could remind a project manager to approve actuals reported by staff. Or it might alert administrators about error logs. Another example is if payment-related milestones are delayed beyond the end of the month and the accounting department is alerted automatically.

The Benefits:

- Efficient and documented reminders that support processes
- Supports easy weekly and monthly reporting for projects
- Immediately alerts administrators about error logs, facilitating high availability of the project management solution

Features At-a-Glance:

- Integration in Microsoft Project Server and SQL Server environments
- Extensively configurable (solution includes several preconfigured alerts)
- Can be used for any type of event-driven alerts based on SQL Server
- Can automatically retrieve and attach documents from the file system
- Alerts can be sent as formatted HTML or plain text emails

www.theprojectgroup.com/mailnotifier

Compatibility:

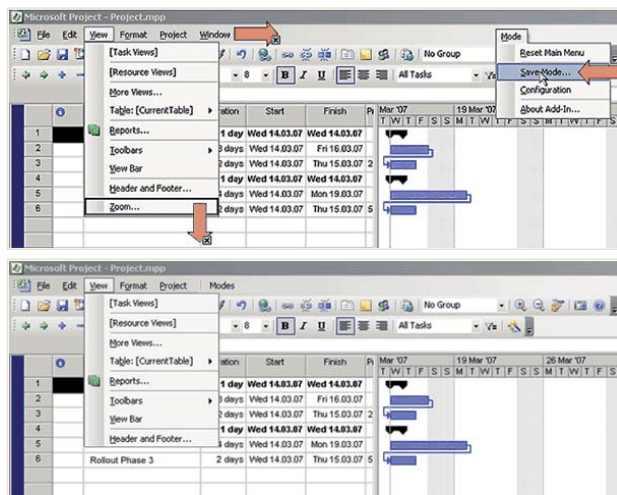
Microsoft Project Server 2003
Microsoft Project Server 2007
Microsoft Project Server 2010
SQL Server 2000
SQL Server 2005
SQL Server 2008

TPG ToolbarCustomizer 2007

Slimmed-Down Menus Make it Easier to Work with Microsoft Project

Microsoft Project provides powerful functionality in extensive menus. Typically users only need a few functions for their everyday work. They find that the menus are too confusing and hinder rather than help them in their work – and in the worst case they will refuse to use Microsoft Project because they find it too complicated. This is where TPG Toolbar-Customizer can help.

With TPG ToolbarCustomizer, menus can be customized individually for each user, just leaving the functions they really need. Any unwanted functions from menus and sub-menus can simply be removed from the Microsoft Project Client with a click of the mouse.



Even if you're using the Microsoft Project Server and third-party add-in products, you can simply hide menu options as required. The resulting view then replaces the default mode, although this can be restored at any time.

The Benefits:

- Higher user acceptance of Microsoft Project due to less complexity
- Increased efficiency from working with a clearer layout

Features At-a-Glance:

- Seamlessly integrated in the Microsoft Project client
- Simple removal of unnecessary menu options with a mouse click
- Easy to save and toggle between different views as needed
- Administrators can centralize and copy saved views to other PCs
- Simple restoration of the original view

www.theprojectgroup.com/toolbarcustomizer

Compatibility:

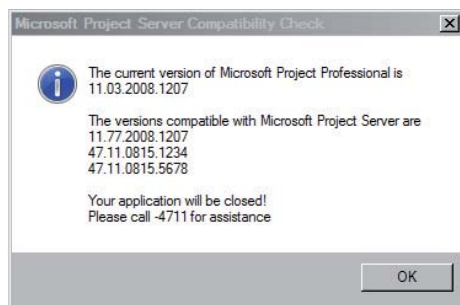
Microsoft Project 2003
Microsoft Project 2007

TPG VersionChecker 2010

Prevent Crashes of Microsoft Project and Assure User Acceptance

TPG VersionChecker resolves a problem that administrators frequently encounter. If project managers try to access a Project Server with a certain update status from their Project Client with an incompatible update status, there is a danger that the program will crash and that erroneous or corrupt data will be left on the system. This can make users hesitant to access the server and increases the administrator's workload when the problem arises.

When Microsoft Project Professional starts, the TPG VersionChecker verifies the updates installed on the Project client and server. If it detects a critical combination of updates, it stops the client from opening the program.



Instead, it displays a configurable message and gives the user advice on how to solve the problem. The incompatibility issue may be due to service packs that were installed automatically on the Microsoft Project Professional client, or to new client installations by users.

The Benefits:

- Saves time for administrators as they can eliminate this issue as the source of a crash
- Prevents the presence in the system of data that has become corrupt due to incompatibilities
- User acceptance of the Project Server solution is maintained due to fewer crashes and data corruption issues

Features At-a-Glance:

- Can be installed remotely by TPG in less than a day

www.theprojectgroup.com/versionchecker

Compatibility:

Microsoft Project Server 2003
Microsoft Project Server 2007
Microsoft Project Server 2010

TPG The Project Group

IT Solutions and Products for Enterprise-Wide Project Management

TPG The Project Group is an international full-service provider of consulting, products, solutions, hosting, and training for project management and Microsoft Project. Many companies across all industry sectors benefit from our proven products, especially the well-known TPG PSLink®, the world's leading integration of Microsoft Project with SAP. We increase the maturity level of our customers' project management, making a significant contribution to their business success. We have offices in Germany, Austria, USA and Great Britain as well as an international partner network representing us on all continents.

The headquarter of TPG America, our US branch office, is based out of Jamison, Pennsylvania. Our US team comprises certified professionals with ample experience, who are dedicated to serve specifically companies in the North and South America.

TPG UK is based in Wakefield, West Yorkshire. This team also provides ample experience in enterprise project management solutions, especially integrated with SAP.

International Contacts

World (except America and UK)

TPG The Project Group GmbH
Destouchesstr. 68
80796 Munich
Germany
Phone: +49 89 615 593 30
E-mail: info@theprojectgroup.com

North and South America

TPG The Project Group America Inc.
2500 York Road, Suite 115
Jamison, PA 18929
USA
Phone/Fax: +1 800 804 0646
E-mail: America@theprojectgroup.com

United Kingdom, Australia and New Zealand

TPG The Project Group UK Ltd.
New City Chambers
36 Wood Street
Wakefield, West Yorkshire, WF1 2HB
United Kingdom
Phone: +44 844 335 0368
Email: UK@theprojectgroup.com

Some of our customers

Automotive

- Audi
- Bosch
- Continental
- Daimler
- Goodyear
- Harman International
- Keiper Recaro
- Schukra Europe
- SEW Eurodrive

Banking & Insurance

- Gmünder Ersatzkasse
- LFA Förderbank Bayern
- Münchener Verein
- Neue Zürcher Bank
- VHV Holding

Chemicals & Pharma

- Bausch & Lomb
- Cognis
- Lonza
- SGL Carbon

Defense & Aviation

- ATLAS Elektronik
- BAE Systems
- EADS
- Kayser-Threde
- MT Aerospace
- Raytheon Marine
- TDW

Electronics

- Agere/LSI
- Kontron
- General Electric
- Infineon
- Texas Instruments
- Tyco Electronics

Energy & Mining

- Corus
- E.ON Gas
- E.ON Power
- Hydro Quebec

IT & Telecommunication

- AOL
- Bentley Systems
- Dimension Data
- Frequentis
- Microsoft
- SAP
- Siemens Information Systems
- Swisscom
- T-Systems

Manufacturing

- Bosch Siemens Household App.
- DEMAG Cranes
- Felsomat Industry-Automation
- MAN
- Miele Household Appliances
- MTU Friedrichshafen
- Nordex Wind Turbines
- Siemens Energy
- Varian Medical Systems

Public Sector

- Bavarian Broadcasting
- City of Braunschweig
- Cologne Public Transport
- DESY
- Irish Rail
- KV Bayern

Services

- Bearing Point
- Carlson Wagonlit Travel
- GCT Garner
- Getronics