

**Empower people throughout your organization with the right tools to transform challenges into opportunities.**

We help you maximize value for your investments in Microsoft EPM 2010 and EPM Live WorkEngine platforms. Through our proven five-stage deployment methodology and best practices documented in our Deployment Playbooks, we help you implement solutions in a way that accelerates time-to-value and lowers risk.

We provide technology-enabled solutions for Enterprise Portfolio Management, IT Governance, PMO, Time-to-Market, Project & Program Management and related initiatives. We assist our customers to conduct PPM assessments, build roadmaps, select the technology (PPM/EPM tool) and conduct multi-phase implementations aligned with relevant process frameworks such as CMMi, PMBOK, Agile, Prince2, etc.

**Microsoft Enterprise Project Management (EPM) 2010**

We employ a personalized approach to ensure that Microsoft Enterprise Project Management (EPM) solution is implemented and configured optimally to address your enterprise project management needs and map to your vision for improving your Project Management Maturity. We combine your prioritized business needs with our experience implementing EPM solutions. We work with you to adapt the technology to your business, helping you install, configure, customize, extend and integrate the Microsoft EPM solution that will serve your organization in the most efficient and cost-effective manner. We also provide extended services on MS EPM platform as under:

**EPM-SAP Integration:** TPG PSLink is the world's leading and SAP-certified product for the integration of Microsoft Project Server and SharePoint with SAP modules like PS, PM, CATS and others. The product was first released over 12 years ago, and since then has evolved and improved.

**Enhanced Financial Management:** UMT Project Financial Server 2010 brings together the leading project and portfolio management (PPM) capabilities of Project Server 2010 with comprehensive cost and benefit management techniques to provide financial transparency, control and accountability across the life cycle.

**EPMLive WorkEngine**

EPM Live WorkEngine has evolved the Microsoft SharePoint Server stack to a more comprehensive and integrated Enterprise Project and Work Management system. Building on the familiar Microsoft tools that many people already know, the EPM Live WorkEngine solution includes web parts, Microsoft Project add-ins, SharePoint features, SharePoint applications, and industry best practices & process templates designed to work together to help you address your Enterprise Project and Work Management needs.

WorkEngine has many powerful capabilities to help organizations maximize productivity. WorkEngine's core capabilities include SharePoint Task Management, SharePoint Schedule Management, and SharePoint Timesheets in addition to the core capabilities found in WorkEngine's feature applications. WorkEngine's SharePoint Project Portfolio Management allows you to view all project investments and monitor overall project portfolio performance to ensure that you are achieving your investment objectives. WorkEngine's SharePoint Resource Management allows you to plan and coordinate resource workload to ensure proper placement, expertise, and efficiency. WorkEngine's SharePoint Time Management helps you understand the full effort associated with the execution of any work item.

WorkEngine's feature-rich prebuilt applications include SharePoint Workforce Management, SharePoint Project and Portfolio Management, SharePoint Account Management, SharePoint Product and Software Development, SharePoint Agile Management, SharePoint Service Management and many others to align you with best practice implementations and get you up and running quickly and affordably.



1. Project Server 2010
2. EPM-SAP Integration
3. UMT Financial Server 2010
4. CCPM+ Add-ins



1. Project Portfolio Management
2. Services Management
3. Program Management
4. Agile Management

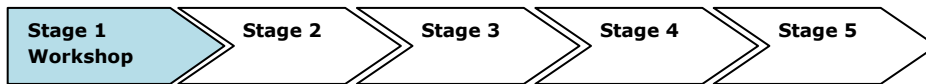
## Magus EPM Solution Framework

Introducing project management into your company and integrating it with your existing business processes requires deep knowledge of the whole subject as well as significant experience. Magus team has both.

Our focus is on methods and tools for the optimal IT support of Project Management Offices (PMO) and for the integration of SAP and external databases. Magus is one of the leading Microsoft Premier Project Partners in the Indian subcontinent, and Microsoft Project is the basis for our solutions which we complement with our add-in products.

The MSF 5-Phase Method is the focal point of our many years of practical experience advising large and mid-sized companies in all industries. This experience forms the basis of the way we plan and implement your professional project management solution.

Stage 1: **Workshop** – Clearly Defining Needs



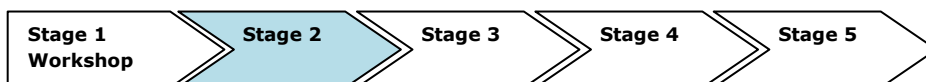
**Initial situation:** The date for the workshop has been agreed. You have invited representatives from all the job functions involved in the project management solution (e.g. PMO manager, project manager, IT manager, project staff and administrators).

**Approach:** Magus prepares an EPM prototype for your workshop based on information you supply concerning your company, together with some key data (e.g. on your organizational structure and resources). We also need some details from you about access permissions to projects and resources; project portfolio attributes; and the type of analyses you require. During the workshop, we gather more details on your requirements and ensure all participants are on the same page. Your requests and processes are then implemented in the EPM prototype we prepared prior to the workshop. As far as possible, we do these using real-life examples.

Next, we run through the life cycle of a project from the viewpoint of all the groups participating, and define how we are going to import existing data into the system. This step enables you to review the feasibility of your requirements. In preparation for the pilot phase, we resolve any questions on project and resource structures; technical system requirements; responsibilities; and training, then schedule the next steps. After this, we put together the pilot team. Its size will vary depending on the complexity of the project, but we recommend keeping it to a manageable size – usually between 3 and 8 people.

**Result:** You are now briefed on the necessary scope of your project management solution. You have an EPM prototype populated with your own data and adapted to your processes, and the roadmap has been defined. Magus now has a good basis for preparing a tailored proposal for the implementation.

Stage 2: **Implementation** – Constructing Your Project Management Solution



**Initial situation:** As a result of the workshop, you now have the requirements emanating from the different user groups; you have also defined the interfaces to and from the external systems, and documented and fulfilled the system requirements.

**Approach:** Working in tandem with your technical specialists, we install your EPM solution and integrate it into your IT environment. The data we collected during the workshop is transferred to the pilot system. If necessary, we can program extensions to the complete solution and integrate them step by step. Finally, we train the pilot team.



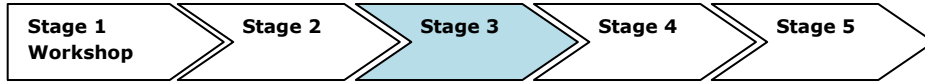
## Magus EPM Solution Framework

5. Workshop
6. Implementation
7. Pilot
8. Rollout
9. Production



Result: The technical implementation of the solution is complete. The system now has a sufficient range of functions to support the transition to the pilot

Stage 3: **The Pilot** - Rigorous Testing

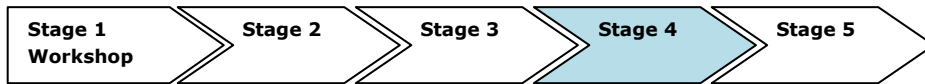


Initial situation: The pilot team starts using the customized solution, extended with interfaces and specialized functions, in their own environment.

Approach: The project team consists of your project manager and specialists from Magus. It guides the pilot team and checks on progress. Pilot team members test the solution in real-life conditions using clearly defined scenarios and test procedures. They document all of their results, which may lead to the pilot system being modified, if necessary. To ensure the success of this phase, it is essential that both teams meet regularly; we recommend an interval of 1-2 weeks between meetings.

Result: The fully configured solution is ready for production use. The pilot and project teams approve its release from a technical and content-based standpoint.  
Phase 4: Rollout – The Optimized Solution Goes Into Production.

Stage 4: **Rollout** – The Optimized Solution Goes Into Production



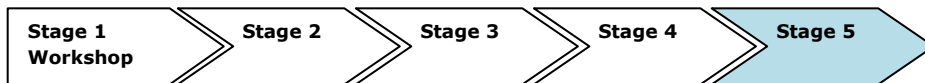
Initial situation: The EPM solution is released for rollout.

Approach: All of the pre-existing tools are replaced by the new enterprise-wide solution. Our specialists transfer your existing projects and documents to the production environment. Your IT department starts deploying the solution to users' workstations.

In parallel, we run role-based training for users with up-to-date, company-specific data and structures related to the work processes of each job function. This enables users to see how the solution will make their own work easier. Depending on the scope of your EPM solution, it might be advisable or even necessary to customize the training documents beforehand.

Result: You achieved your goal! Your professional project management solution is ready to use. It is being utilized by individually trained users in all areas.

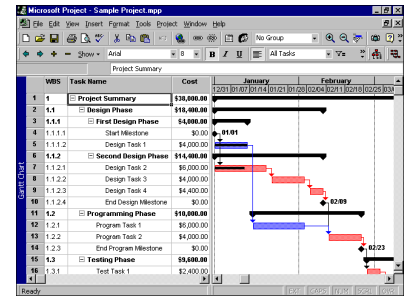
Stage 5: **Production** – Safe Operation With Competent Support



Initial situation: Your EPM solution is fully integrated and deployed.

Approach: Your personalized project management solution is an investment in people, products, and processes. It will be used for many years and become a part of your everyday work. Magus supports you with regular maintenance, staff coaching, and fast support. If necessary, we can adapt the solution to new system environments or requirements. The data and knowledge amassed by the system underpin your ongoing productivity improvements.

Result: You benefit from active support during the entire lifecycle of your solution.



Magus EPM Solution Framework

1. Workshop
2. Implementation
3. Pilot
4. Rollout
5. Production

## Magus PPM Practice

Magus employs a personalized approach to ensure that solutions are implemented and configured optimally to address your enterprise project management needs and map to your vision for improving your Project Management Maturity.

We combine your prioritized business needs with our experience implementing EPM solutions. And we work with you to adapt the technology to your business, helping you install, configure, customize, extend and integrate the Microsoft EPM solution that will serve your organization in the most efficient and cost-effective manner. We provide the following services in support of Microsoft Project Platform.

**Readiness and Maturity assessments:** We perform readiness and maturity based assessments to help organizations develop a business implementation and change management strategy.

**Planning services:** We put customers on the fast track to success by developing a personalized and staged deployment plan. We offer our experience, knowledge and best practices with EPM system architecture planning and deployment planning.

**Process development services:** We help customers connect the tool with the business and map PPM capabilities to existing processes and organizational needs. This involves using industry best practices to generate a host of business processes aimed at resource management, project management, cost analysis, portfolio analysis and if applicable Six Sigma analysis.

**Application administration and Configuration services:** We change the branding, site views, layouts and look and feel to tailor PPM solution to an individual customer's preference. We also configure the WSS workflow tool to support project workflow automation requirements. The work here also involves training, server modifications, standardization of procedures, cross complexities of resources and management and a strict code of enterprise functioning within the project management domain.

**Training services:** We offer Microsoft Project and SharePoint based training services to a broad user base that includes project managers, team members, executives as well as system administrators. As premier training provider for Microsoft, we are uniquely positioned to help develop expertise on the latest Microsoft technology by providing classroom training, online training, and facilitated, blended learning solutions.

**Installation and premise based migration services:** We provide installation and migration services to companies that go premise based with EPM Live. We also provide system integration services. Magus technical team has many years of experience exchanging Microsoft Project data with other systems.

**Ongoing deployment support:** We provide ongoing support to help customers continue to achieve ROI's and maximize their investment into our services and Microsoft Project.

**Develop add-on solutions to Microsoft Project:** We create tools, templates, and add-ins that target a specific industry, business pain, and/or capability gap.

Magus PPM Practice works closely with you to define the specific outcomes you require and architects a solution that delivers results in as little as 60-90 days. You choose from Bounded Rapid Implementations, Scalable Solution Implementations, or Pre-developed accelerators that reduce the need for custom development. We also provide health-check and assessment services.

Magus has an extremely satisfied customer base and several hundred-man months of experience in deploying and supporting PPM initiatives, We have created and deployed several IPs that provide out-of-the-box content on leading PPM/EPM tools. If you are considering alternative access and delivery models to minimize complexity or address costs, we also provide Hosting Services and On-Demand Services alternatives for On-Premise PPM solution.



## Magus EPM Practice

1. Readiness & Maturity Assessment
2. Planning Services
3. Process Development
4. Application administration & Configuration
5. Training
6. Installation & Migration
7. Support
8. Add-on Solutions

