



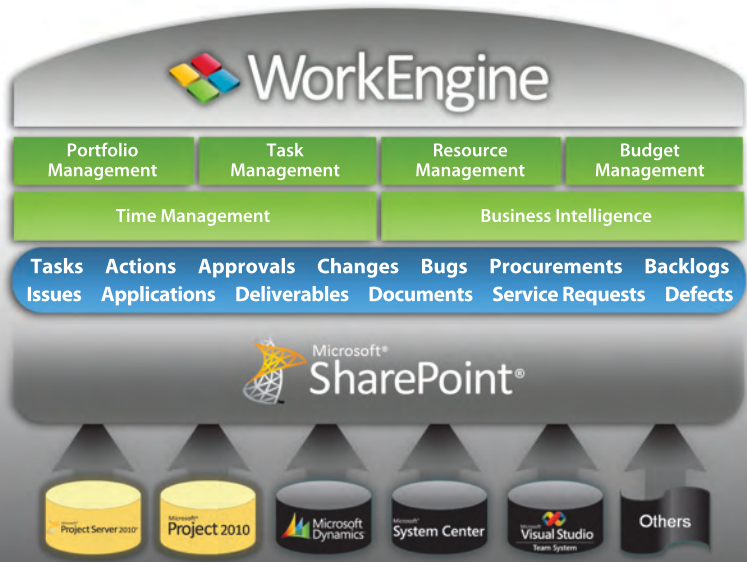
 **WorkEngine**

Powered by
 **SharePoint®**

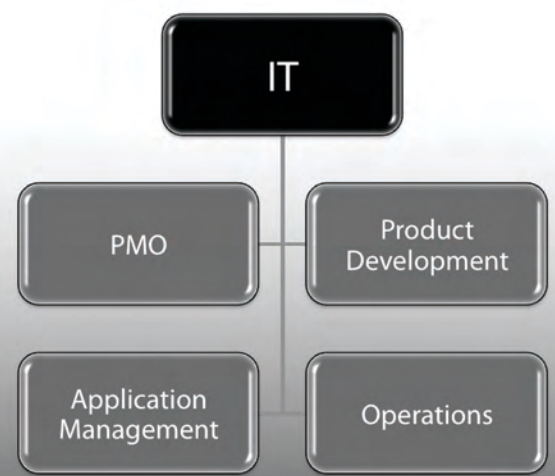
IT Planning & Control

**Manage All IT Work Across the Organization in a Single Solution,
 and on a Single Microsoft SharePoint Platform**

- Provide a Complete IT Project and Work Management Solution by Leveraging Microsoft's SharePoint Platform
- Visualize All Work Status through Real-Time Reports and Dashboards
- Provide a Central Place For Personnel to Receive and Status All of Their Work Assignments
- Manage Projects, Software Development, Application Management and Operational Work in a Common Solution
- Standardize and Automate Business Processes with Flexible Workflow Solutions
- Gain Visibility into All Resource Demands Across All Types of Work Throughout the Organization




Manage all work in your portfolio




Across your organization



Portfolio Management
View all project investments and monitor overall project portfolio performance to ensure that you are achieving your investment objectives




Schedule Management
Control your schedules and prevent schedule variances to optimize successful delivery




Resource Management
Plan and coordinate resource workload to ensure proper placement, expertise and efficiency




Cost Management
Estimate, analyze and track all project costs to ensure project value and performance



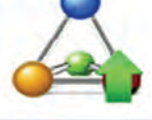
Task Management
View and update all my tasks and responsibilities across all project work items from a single view



Work Management
Understand the full effort associated with your project. Manage all work that is generated for and by your projects




Document Management
Easily manage documents by viewing them and uploading them into an online document repository so others on the team can easily collaborate



Workflow and Process Management
Create easy, flexible and integrated workflow solutions that result in improved productivity and increased accountability



Pre Built Solutions
EPM Live provides best practices configurations and templates to get your solution up and running quickly



Reporting
Visualize project status through real-time project dashboards and produce pre-defined progress reports that enhance project credibility

