

## **Empower people throughout your organization with the right tools to transform challenges into opportunities.**

We believe that any company's most unique and important asset is its people. People are responsible for driving successful business outcomes. We believe that software is the one technology investment that can significantly amplify people's impact and enable them to achieve these business outcomes. And we think that Microsoft software is the best software to do this, because it is innovative and evolves to meet future needs, is familiar and easy to use, integrates easily, and is widely used and supported. **Bet on people, bet on software, bet on Microsoft.**

The Microsoft Office Enterprise Project Management (EPM) Solution is an end-to-end collaborative project and portfolio environment. The Office EPM Solution helps your organization gain visibility, insight, and control across all work, enhancing decision-making, improving alignment with business strategy, maximizing resource utilization, and measuring and helping to increase operational efficiency.

### **Align IT investment with your business strategy**

Organizations are challenged to track and measure the effectiveness of a large number of projects in various aspects of their work, and aligning Information Technology costs with business objectives is becoming increasingly important.

Executives—especially those accountable for the success or failure of IT spending—would benefit from better ways to select the most promising projects from a batch of project candidates, efficiently allocate resources among different ongoing initiatives, and evaluate project success from a strategic vantage point. Recently, individual project management applications have begun to coalesce into integrated suites and complete Enterprise Project Management platforms, providing deeper organizational insight into all aspects of project execution both at the tactical and strategic levels.

The Microsoft® Office Enterprise Project Management Solution provides a full set of capabilities for project teams, managers, and executives and delivers specific benefits for better IT governance and a higher-functioning Program Management Office.

### **Bring products to market more quickly**

Time-to-market is a key competitive differentiator for companies whose business depends on developing, introducing, and marketing new products. Coordination and communication, alignment of individual tasks to overall goals and vision, and speed of execution can all shave precious time from the product development lifecycle, enabling companies to realize faster time-to-market, as well as qualitative improvements to the process.

Information technology can drive efficiencies across the product-development process, both in terms of streamlining specific tasks and ensuring greater overall coordination.

### **Improve quality management in your organization**

Many organizations are taking advantage of quality management methodologies (such as Six Sigma) to improve productivity, efficiency, and customer satisfaction. These methodologies require employees to perform set tasks and adhere to structured processes involving changes to work habits that can sometimes be disruptive to organizations.

Familiar, integrated IT tools can streamline quality management tasks and reduce user resistance, enabling organizations to receive the maximum benefits from quality management techniques at a lower risk. Microsoft delivers an integrated portfolio of offerings to address the challenges of quality management with the benefits of familiarity, ease of integration, and flexibility.



### **Enterprise Project Management**

1. Align IT investment with your business strategy
2. Bring products to market more quickly
3. Improve quality management in your organization

### **Magus EPM Solution Framework**

1. Workshop
2. Implementation
3. Pilot
4. Rollout
5. Production

### **MS EPM Technology Components**

1. Project Professional
2. Project Server
3. Project Web Access
4. Portfolio Server
5. SharePoint Services

### **MS EPM Verticals**

1. Banking & Financial Services
2. Telecom
3. IT & ITES
4. Manufacturing
5. Life Sciences
6. Infrastructure

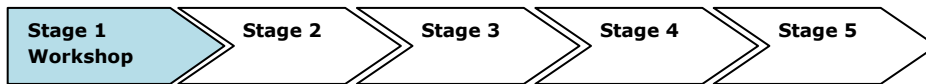
## Magus EPM Solution Framework

Introducing project management into your company and integrating it with your existing business processes requires deep knowledge of the whole subject as well as significant experience. Magus team has both.

Our focus is on methods and tools for the optimal IT support of Project Management Offices (PMO) and for the integration of SAP and external databases. Magus is one of the leading Microsoft Premier Project Partners in the Indian subcontinent, and Microsoft Project is the basis for our solutions which we complement with our add-in products.

The MSF 5-Phase Method is the focal point of our many years of practical experience advising large and mid-sized companies in all industries. This experience forms the basis of the way we plan and implement your professional project management solution.

Stage 1: **Workshop** – Clearly Defining Needs



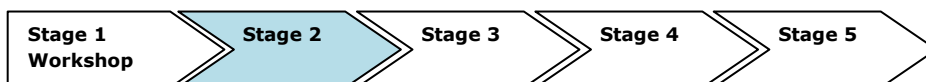
Initial situation: The date for the workshop has been agreed. You have invited representatives from all the job functions involved in the project management solution (e.g. PMO manager, project manager, IT manager, project staff and administrators).

Approach: Magus prepares an EPM prototype for your workshop based on information you supply concerning your company, together with some key data (e.g. on your organizational structure and resources). We also need some details from you about access permissions to projects and resources; project portfolio attributes; and the type of analyses you require. During the workshop, we gather more details on your requirements and ensure all participants are on the same page. Your requests and processes are then implemented in the EPM prototype we prepared prior to the workshop. As far as possible, we do these using real-life examples.

Next, we run through the life cycle of a project from the viewpoint of all the groups participating, and define how we are going to import existing data into the system. This step enables you to review the feasibility of your requirements. In preparation for the pilot phase, we resolve any questions on project and resource structures; technical system requirements; responsibilities; and training, then schedule the next steps. After this, we put together the pilot team. Its size will vary depending on the complexity of the project, but we recommend keeping it to a manageable size – usually between 3 and 8 people.

Result: You are now briefed on the necessary scope of your project management solution. You have an EPM prototype populated with your own data and adapted to your processes, and the roadmap has been defined. Magus now has a good basis for preparing a tailored proposal for the implementation.

Stage 2: **Implementation** – Constructing Your Project Management Solution



Initial situation: As a result of the workshop, you now have the requirements emanating from the different user groups; you have also defined the interfaces to and from the external systems, and documented and fulfilled the system requirements.

Approach: Working in tandem with your technical specialists, we install your EPM solution and integrate it into your IT environment. The data we collected during the workshop is transferred to the pilot system. If necessary, we can program extensions to the complete solution and integrate them step by step. Finally, we train the pilot team.



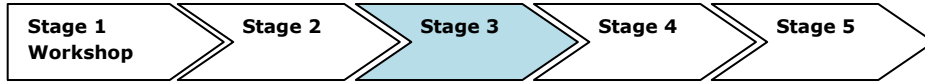
## Magus EPM Solution Framework

1. Workshop
2. Implementation
3. Pilot
4. Rollout
5. Production



Result: The technical implementation of the solution is complete. The system now has a sufficient range of functions to support the transition to the pilot

Stage 3: **The Pilot** - Rigorous Testing

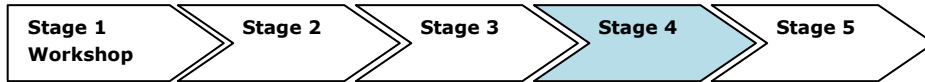


Initial situation: The pilot team starts using the customized solution, extended with interfaces and specialized functions, in their own environment.

Approach: The project team consists of your project manager and specialists from Magus. It guides the pilot team and checks on progress. Pilot team members test the solution in real-life conditions using clearly defined scenarios and test procedures. They document all of their results, which may lead to the pilot system being modified, if necessary. To ensure the success of this phase, it is essential that both teams meet regularly; we recommend an interval of 1-2 weeks between meetings.

Result: The fully configured solution is ready for production use. The pilot and project teams approve its release from a technical and content-based standpoint.  
Phase 4: Rollout – The Optimized Solution Goes Into Production.

Stage 4: **Rollout** – The Optimized Solution Goes Into Production



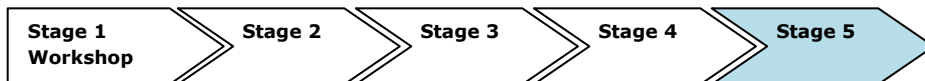
Initial situation: The EPM solution is released for rollout.

Approach: All of the pre-existing tools are replaced by the new enterprise-wide solution. Our specialists transfer your existing projects and documents to the production environment. Your IT department starts deploying the solution to users' workstations.

In parallel, we run role-based training for users with up-to-date, company-specific data and structures related to the work processes of each job function. This enables users to see how the solution will make their own work easier. Depending on the scope of your EPM solution, it might be advisable or even necessary to customize the training documents beforehand.

Result: You achieved your goal! Your professional project management solution is ready to use. It is being utilized by individually trained users in all areas.

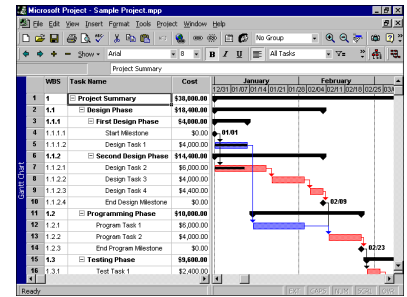
Stage 5: **Production** – Safe Operation With Competent Support



Initial situation: Your EPM solution is fully integrated and deployed.

Approach: Your personalized project management solution is an investment in people, products, and processes. It will be used for many years and become a part of your everyday work. Magus supports you with regular maintenance, staff coaching, and fast support. If necessary, we can adapt the solution to new system environments or requirements. The data and knowledge amassed by the system underpin your ongoing productivity improvements.

Result: You benefit from active support during the entire lifecycle of your solution.



Magus EPM Solution Framework

1. Workshop
2. Implementation
3. Pilot
4. Rollout
5. Production

## Technology Platform

The Office EPM Solution includes the following products from the Microsoft Office Project 2007 family to provide organizations with an end-to-end project portfolio management (PPM) solution:

### Microsoft Office Project Professional 2007

Microsoft Office Project Professional 2007 includes all the capabilities in Microsoft Office Project Standard 2007. Office Project Professional 2007 gives you robust project management tools with the right blend of usability, power, and flexibility, so you can manage projects more efficiently and effectively. You can stay informed, control project work, schedules, and finances, and keep project teams aligned, while becoming more productive through powerful reporting options, integration with familiar Microsoft Office system programs, guided planning, wizards, and templates. In addition, Office Project Professional 2007 provides EPM capabilities when connected to Microsoft Office Project Server 2007.

### Microsoft Office Project Server 2007

Office Project Server 2007 is the flexible platform that supports the resource management, scheduling, reporting, and collaboration capabilities in the Office EPM Solution. Office Project Server 2007 enables organizations to store project and resource information centrally and consistently. It also integrates with Microsoft Windows SharePoint Services 3.0 for file management and collaboration capabilities, helping team members to work together more effectively. Further, based on their roles, users can access data and functionality via the Internet with Microsoft Office Project Web Access.

### Microsoft Office Project Portfolio Server 2007

Office Project Portfolio Server 2007 is a top-down portfolio management solution that helps organizations to realize their potential by identifying, selecting, managing, and delivering portfolios that best align with their business strategy. Office Project Portfolio Server 2007 integrates with Office Project Server 2007 to provide organizations with an end-to-end project portfolio management solution, accessed via Microsoft Office Project Portfolio Web Access.

## Magus EPM Practice

Magus employs a personalized approach to ensure that solutions are implemented and configured optimally to address your enterprise project management needs and map to your vision for improving your Project Management Maturity.

We combine your prioritized business needs with our experience implementing EPM solutions. And we work with you to adapt the technology to your business, helping you install, configure, customize, extend and integrate the Microsoft EPM solution that will serve your organization in the most efficient and cost-effective manner. We provide the following services in support of Microsoft Project Platform.

**Readiness and Maturity assessments:** We perform readiness and maturity based assessments to help organizations develop a business implementation and change management strategy.

**Planning services:** We put customers on the fast track to success by developing a personalized and staged deployment plan. We offer our experience, knowledge and best practices with EPM system architecture planning and deployment planning.

**Process development services:** We help customers connect the tool with the business and map EPM capabilities to existing processes and organizational needs. This involves using industry best practices to generate a host of business processes aimed at resource management, project management, cost analysis, portfolio analysis and if applicable Six Sigma analysis.



### MS EPM Technology Components

1. Project Professional
2. Project Server
3. Portfolio Server



**Application administration and Configuration services:** We change the branding, site views, layouts and look and feel to tailor EPM to an individual customer's preference. We also configure the WSS workflow tool to support project workflow automation requirements. The work here also involves training, server modifications, standardization of procedures, cross complexities of resources and management and a strict code of enterprise functioning within the project management domain.

**Training services:** We offer Microsoft Project and SharePoint based training services to a broad user base that includes project managers, team members, executives as well as system administrators. As premier training provider for Microsoft, we are uniquely positioned to help develop expertise on the latest Microsoft technology by providing classroom training, online training, and facilitated, blended learning solutions.

**Managing Projects with Microsoft Office Project 2007:** The Microsoft Certified Technology Specialist (MCTS) credential for Office Project 2007 validates the skills of individuals who use Microsoft Office Project 2007 and serve as team members, project leads, project managers, schedulers, or in other roles that require the ability to build, maintain, and control well-formed project plans. This candidate is involved in or responsible for scheduling, estimating, coordinating, controlling, budgeting, and staffing projects and supporting other users of Office Project.

**Enterprise Project Management with Microsoft Office Project Server 2007:** The Microsoft Certified Technology Specialist (MCTS) credential for Office Project Server 2007 provides industry recognition for project managers and other users who manage and support both simple and complex projects in an enterprise environment. This candidate can use Office Project Professional 2007 or Project Server 2007 to effectively manage project and non-project efforts, risks, issues, documents, task progress, and timesheets.

**Installation and premise based migration services:** We provide installation and migration services to companies that go premise based with EPM Live. We also provide system integration services. Magus technical team has many years of experience exchanging Microsoft Project data with other systems.

**Ongoing deployment support:** We provide ongoing support to help customers continue to achieve ROI's and maximize their investment into our services and Microsoft Project.

**Develop add-on solutions to Microsoft Project:** We create tools, templates, and add-ins that target a specific industry, business pain, and/or capability gap.

### **Magus Infotech India (P) Ltd.,**

Magus is a Microsoft technology consulting company that provides application development, enterprise solutions and infrastructure services. Our experienced teams use a proven approach and a personal relationship style to deliver the right solutions for our clients. We are a Microsoft Certified Partner, and have been building business-critical systems and helping our clients maximize their investment in Microsoft technology since 1999.

We at Magus have a wealth of experience in enterprise (ERP/SCM/CRM/EPM) solutions. We are recognized for our knowledge and experience on enterprise business systems. We are committed to deliver world-class enterprise-level solutions with the benefits of an on-site staff and the economics of off shoring. Magus has top-notch program management team, deep technology and architecture capability, next-generation delivery capabilities, and the technology tools needed to execute large-scale programs.

We are constantly finding innovative ways to blend people, process and technologies to deliver bottom-line benefits to our customers. We measure our contributions through increased customer satisfaction, client retention rates and value delivered.



### **Magus EPM Practice**

1. Readiness & Maturity Assessment
2. Planning Services
3. Process Development
4. Application administration & Configuration
5. Training
6. Installation & Migration
7. Support
8. Add-on Solutions

